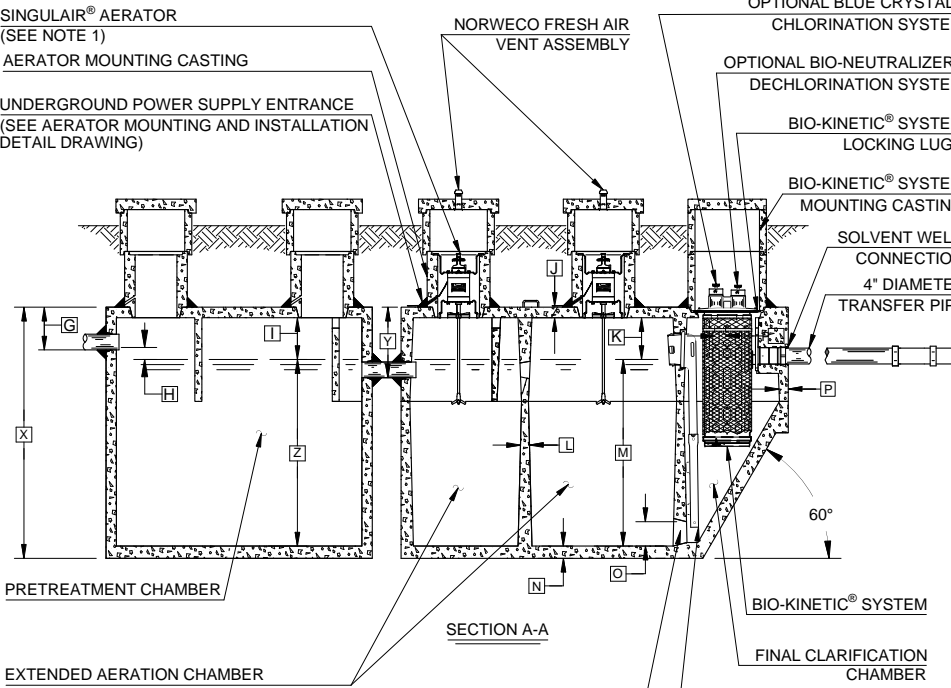
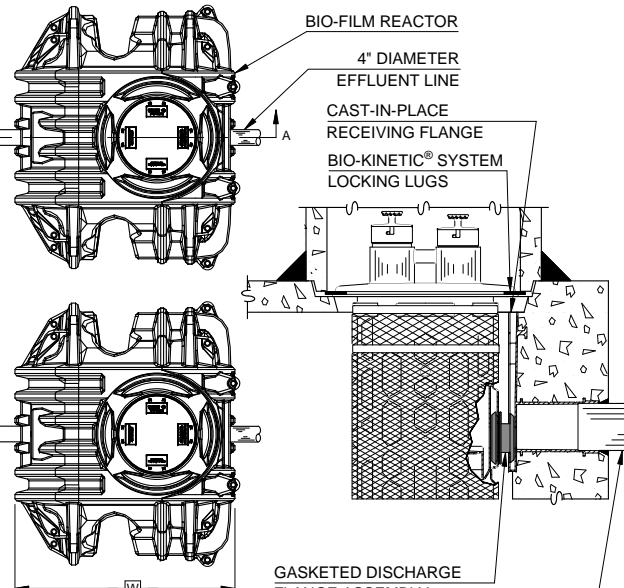


PLAN VIEW

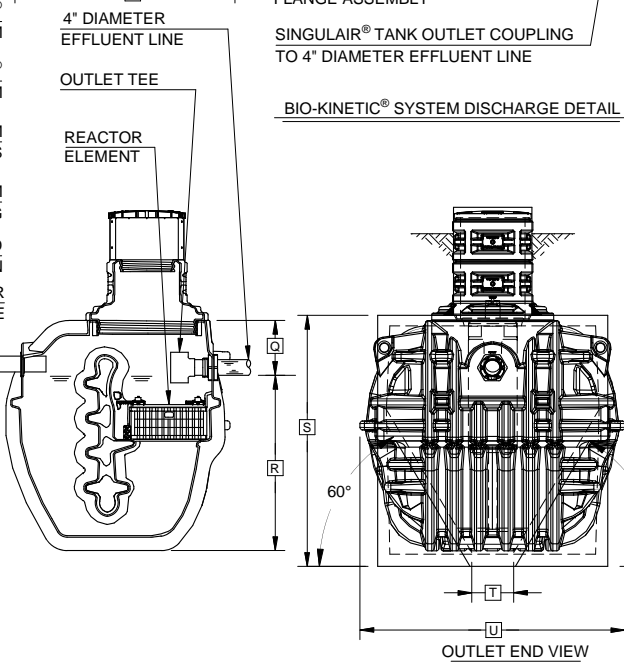


SECTION A-A

NOTE: PRETREATMENT CHAMBER MINIMUM REQUIREMENTS SHALL BE: 1,000 GALLONS CAPACITY, 15 GALLONS PER INCH OF LIQUID LEVEL AND 12 INCHES OF FREEBOARD.



BIO-KINETIC® SYSTEM DISCHARGE DETAIL



OUTLET END VIEW

NOTE: TOTAL SYSTEM CAPACITY: 3,270 GALLONS
RATED CAPACITY: 1,000 GALLONS PER DAY

NOTE: SOME CRITICAL DIMENSIONS ARE INTENTIONALLY LEFT BLANK TO BE FILLED IN PER INDIVIDUAL JOB SITE SPECIFICATIONS.

GENERAL NOTES:

- ① SINGLAIR® AERATOR, AS TESTED AND ACCEPTED BY NSF, OPERATING 30 MINUTES ON / 30 MINUTES OFF.
- ② FALL THROUGH SINGLAIR® PLANT FROM INLET INVERT TO OUTLET INVERT IS FOUR INCHES AND THROUGH BIO-FILM REACOR IS ONE INCH. INLET INVERT IS TWELVE INCHES BELOW TANK TOP.
- ③ ON DEEPER INSTALLATIONS, PRECAST RISERS MUST BE USED TO EXTEND AERATOR MOUNTING CASTING AND BIO-KINETIC® SYSTEM MOUNTING CASTING TO GRADE.
- ④ TANK REINFORCED PER ACI STD. 318-02.
- ⑤ REMOVABLE COVERS ON RISERS WEIGH IN EXCESS OF SEVENTY-FIVE POUNDS EACH TO PREVENT UNAUTHORIZED ACCESS.
- ⑥ CONTACT THE LOCAL, LICENSED SINGLAIR® DISTRIBUTOR FOR ELECTRICAL REQUIREMENTS.

PROJECT ENGINEER'S APPROVAL:
I (WE) HEREBY CERTIFY THAT THIS DRAWING HAS BEEN CHECKED AND IS APPROVED FOR USE IN CONFORMITY WITH THE CONTRACT DOCUMENTS.

DATE: _____

NAME: _____

CONTRACTOR'S CERTIFICATION:
I (WE) HEREBY CERTIFY THAT THIS DRAWING HAS BEEN CHECKED AND IS APPROVED FOR USE IN CONFORMITY WITH THE CONTRACT DOCUMENTS.

DATE: _____

NAME: _____

CRITICAL DIMENSIONS

A	1'-0"	N	0'-3"
B	2'-9"	O	0'-6"
C	2'-8"	P	0'-2 1/2"
D	3'-7"	Q	1'-3 1/2"
E	2'-3"	R	4'-2 1/2"
F	9'-3"	S	6'-0"
G	1'-0"	T	1'-0"
H	0'-3"	U	6'-3"
I	1'-0"	V	5'-6"
J	0'-3"	W	5'-5"
K	1'-0"	X	
L	0'-2"	Y	1'-8"
M	4'-6"	Z	

U.S. AND FOREIGN PATENTS PENDING	<p>SINGLAIR® BIO-KINETIC® WASTEWATER TREATMENT SYSTEM MODEL 950 - 1000 GPD WITH INSPECTION PORT RISER AND BIO-FILM REACTORS</p>	DESIGNED BY	JMM
		DRAWN BY	JMM
		DATE	03-24-2016
		SCALE	NTS
© MMXVI	THIS DRAWING IS THE PROPERTY OF NORWECO. IT IS TO BE USED ONLY FOR THE PROJECT AND NOT TO BE REPRODUCED OR TRANSMITTED IN ANY FORM OR BY ANY MEANS WITHOUT WRITTEN PERMISSION FROM NORWECO.	DRAWING NO.	PC-5-1149